

Wissenschaftspreis der Österreichischen Gesellschaft für Wirbelsäulenchirurgie 2011

Janina M. Patsch, MD PhD^{1,2}

¹ Universitätsklinik für Radiodiagnostik, MUW

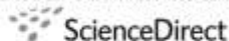
² Department of Radiology and Biomedical Imaging, UCSF



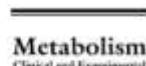
Preisverleihung 2011



Available online at www.sciencedirect.com



Metabolism Clinical and Experimental 60 (2011) 243–249



www.metabolismjournal.com

Increased bone resorption and impaired bone microarchitecture in short-term and extended high-fat diet-induced obesity

Janina M. Patsch^{a,b}, Florian W. Kiefer^c, Peter Varga^d, Pamela Pail^e, Martina Rauner^{a,c}, Daniela Stupphann^a, Heinrich Resch^f, Doris Moser^g, Philippe K. Zysset^d, Thomas M. Stulnig^c, Peter Pietschmann^{a,*}

^aDivision of Cellular and Molecular Pathophysiology, Department of Pathophysiology, Center of Physiology, Pathophysiology and Immunology, Medical University Vienna, A-1090 Vienna, Austria

^bDivision of Neuroradiology and Musculoskeletal Radiology, Department of Radiology, Medical University Vienna, A-1090 Vienna, Austria

^cClinical Division of Endocrinology and Metabolism, Department of Internal Medicine III, Medical University Vienna, A-1090 Vienna, Austria

^dInstitute of Lightweight Design and Structural Biomechanics, Vienna University of Technology, A-1040 Vienna, Austria

^eDivision of Endocrinology, Diabetes, and Bone Diseases, Department of Medicine III, Technical University Dresden, Dresden, Germany

^fMedical Department II, St. Vincent Hospital Vienna, A-1040 Vienna, Austria

^gDepartment of Craniomaxillofacial and Oral Surgery, Medical University Vienna, A-1090 Vienna, Austria

Received 10 October 2006; accepted 17 November 2006

Reiseplanung + Rationale



- Diabetische Osteopathie
- Renale Osteodystrophie
- Nicht-invasive Bestimmung von Knochenmarksfett mittels MR-Spektroskopie

25.-27.7.2011



MGH Boston
M.A. Bredella, MD

28.7.-9.8.2011



NY Presbyterian
T.L. Nickolas, MD

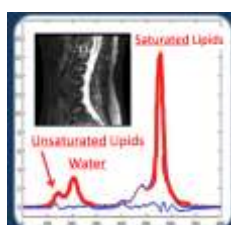
I. MGH – Boston



Minimal-invasive Schmerztherapie in 2 parallel bespielten Durchleutungsräumen



Ausbildung, Optimierung, Spezialisierung, Fehlervermeidung



MR-Spektroskopie des Knochenmarks zur nicht-invasiven Bestimmung von KM-Fettanteil und –Zusammensetzung.

Do you speak Cantonese? – From China Town Boston to China Town NYC



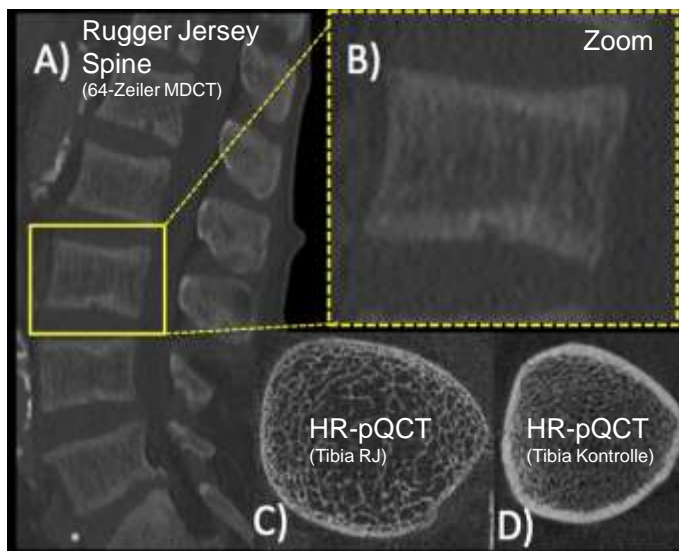
II. NY Presbyterian Hospital (NYC)



HR-pQCT (Wien; MUW)

28.7.-9.8.2011 (NYC)

II. Periphere Knochen-Mikrostruktur bei Patienten mit Rugger Jersey Spine (CKD)



Danke für
Ihre Aufmerksamkeit!

II. NY Presbyterian Hospital (NYC)

